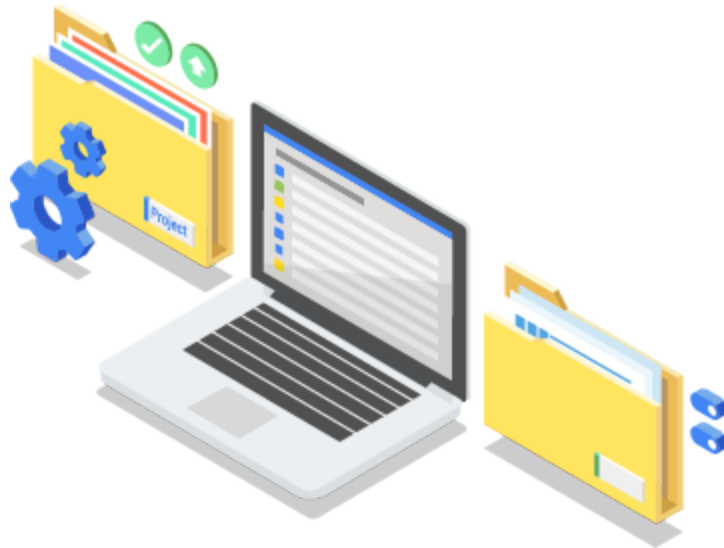


Resource Manager

Hierarchically manage resources by project, folder, and organization.

Try it free (<https://console.cloud.google.com/freetrial>)

[View documentation](https://cloud.google.com/resource-manager/docs/) (<https://cloud.google.com/resource-manager/docs/>) for this product.



Centrally manage all your projects

Google Cloud Platform provides resource containers such as organizations, folders, and projects that allow you to group and hierarchically organize other GCP resources. This hierarchical organization lets you easily manage common aspects of your resources such as access control and configuration settings. Resource Manager enables you to programmatically manage these resource containers.



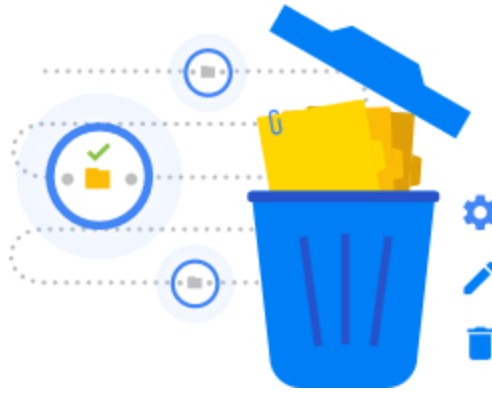
Manage IAM across your org

Create an organization that contains all of your projects and resources. Create folders to group projects by department, team, application, or environment. Easily modify your Cloud Identity and Access Management policies for your organization and folders, and the changes will apply across all the projects and resources. You can also edit projects directly.



Organize resources

Resources are organized hierarchically. An organization is the root node in the hierarchy and has projects and folders as children. Folders can contain projects or other folders. All other resources are the children of projects. Each resource has exactly one parent. Set access control policies and configuration settings at a parent resource, and the policies and settings are inherited by the children resources.



Track and manage projects

Programmatically create, manage, and delete projects and folders that belong to your organization. You can also undelete or recover projects that you didn't mean to delete.

Features

Organization

The [organization](https://cloud.google.com/resource-manager/reference/rest/v1beta1/organizations)

(<https://cloud.google.com/resource-manager/reference/rest/v1beta1/organizations>) resource represents an organization such as your company and is the root node in the Google Cloud Platform resource hierarchy.

Organization policies

Centrally control your organization's resources. Restrict allowed configurations across your entire cloud resource hierarchy programmatically.

Cloud IAM policies

Create and manage IAM access control policies for your organization and projects. Control what access members of the project have to manage virtual machines, logs, and much more.

Asset inventory

Use [Cloud Asset Inventory](https://cloud.google.com/asset-inventory/) (<https://cloud.google.com/asset-inventory/>), a fully-managed metadata inventory service, to gain visibility and monitor all your GCP and Anthos resources and policies. With this tool, you can also easily perform metadata analysis and audit and compliance tasks.

Create, update, delete projects

Create, update, and delete projects that belong to your organization. You can also undelete projects in the “pending deletion” state.

Project details

Pull a list of all projects in the organization.

Cloud folders

Use Cloud folders to organize your resources and configure IAM policies that will apply to all child resources under those folders.

Cloud console and API access

Access Resource Manager in the GCP Console in the Admin section, via Resource Manager API, or through the command line using `gcloud`.

Technical resources



Conceptual overview

View documentation → (<https://cloud.google.com/resource-manager/docs/overview>)



Access control best practices

View documentation → (<https://cloud.google.com/resource-manager/docs/hierarchy-access-control>)



REST API reference

View documentation → (<https://cloud.google.com/resource-manager/reference/rest>)

Pricing

All use of the Resource Manager API is at no additional charge.



Get started

Learn and build

New to GCP? Get started with any GCP product for free with a \$300 credit.

[Try it free \(https://cloud.google.com/free\)](https://cloud.google.com/free)

Need more help?

Our experts will help you build the right solution or find the right partner for your needs.

[Contact sales \(https://cloud.google.com/contact/\)](https://cloud.google.com/contact/)

[Find a partner \(https://cloud.withgoogle.com/partners/\)](https://cloud.withgoogle.com/partners/)